

RESEARCH

Open Access



Post-traumatic stress disorder among persons with HIV who engage in heavy alcohol consumption in southwestern Uganda

Allen Kekibiina¹, Julian Adong¹, Robin Fatch², Nneka I. Emenyonu², Kara Marson², Brian Beesiga³, Sara Lodi⁴, Winnie R. Muyindike^{1,5}, Moses Kamyra³, Gabriel Chamie², Michael G. McDonnell⁶ and Judith A. Hahn^{2,7*}

Abstract

Background: We aimed to describe the prevalence of PTSD symptoms and its associated factors in persons living with HIV (PLWH) in Uganda who engage in heavy alcohol use.

Methods: We analyzed baseline data from the Drinkers Intervention to Prevent Tuberculosis study which enrolls PLWH with latent tuberculosis who engage in heavy alcohol consumption. Using the primary care Post Traumatic Stress Disorder (PTSD) screening scale from the DSM-5 (PC-PTSD-5), probable PTSD was defined as reporting ≥ 3 of 5 assessed symptoms. We conducted the Alcohol Use Disorders Identification Test-Consumption and assessed demographics, smoking, symptoms of depression, and spirituality/religiosity.

Results: Of 421 participants enrolled from 2018 through 2020, the majority (68.2%) were male, median age was 40 years (interquartile range [IQR]: 32–47), and median AUDIT-C score was 6 [IQR: 4–8]. Half (50.1%) of the participants reported ever experiencing a traumatic event, and 20.7% reported ≥ 3 symptoms of PTSD. The most commonly reported PTSD symptoms in the past 1 month in the entire sample were avoidance (28.3%), nightmares (27.3%), and being constantly on guard (21.6%). In multivariable logistic regression analyses, level of alcohol use was not associated with probable PTSD (adjusted odds ratio [AOR] for each AUDIT-C point: (1.02; 95% CI: 0.92–1.14; $p = 0.69$); however, lifetime smoking (AOR 1.89; 95% CI: 1.10–3.24) and reporting symptoms of depression (AOR 1.89; 95% CI: 1.04–3.44) were independently associated with probable PTSD.

Conclusions and recommendations: A history of traumatic events and probable PTSD were frequently reported among persons who engage in heavy drinking, living with HIV in Uganda. Level of alcohol use was not associated with probable PTSD in this sample of PLWH with heavy alcohol use, however other behavioral and mental health factors were associated with probable PTSD. These data highlight the high prevalence of PTSD in this group, and the need for screening and interventions for PTSD and mental health problems.

Keywords: Post-traumatic stress disorder (PTSD), Alcohol, HIV, Uganda

* Correspondence: Judy.Hahn@ucsf.edu

²Department of Medicine, University of California, San Francisco, CA, USA

⁷Department of Epidemiology and Biostatistics, University of California, San Francisco, CA, USA

Full list of author information is available at the end of the article



© The Author(s). 2021 **Open Access** This article is licensed under a Creative Commons Attribution 4.0 International License, which permits use, sharing, adaptation, distribution and reproduction in any medium or format, as long as you give appropriate credit to the original author(s) and the source, provide a link to the Creative Commons licence, and indicate if changes were made. The images or other third party material in this article are included in the article's Creative Commons licence, unless indicated otherwise in a credit line to the material. If material is not included in the article's Creative Commons licence and your intended use is not permitted by statutory regulation or exceeds the permitted use, you will need to obtain permission directly from the copyright holder. To view a copy of this licence, visit <http://creativecommons.org/licenses/by/4.0/>. The Creative Commons Public Domain Dedication waiver (<http://creativecommons.org/publicdomain/zero/1.0/>) applies to the data made available in this article, unless otherwise stated in a credit line to the data.

Introduction

Post-traumatic stress disorder (PTSD) is a significant worldwide health concern, and is highly prevalent in sub-Saharan Africa [1]. A recent meta-analysis showed that the pooled prevalence of probable current PTSD across 10 countries in sub-Saharan Africa was 22% [1]. These numbers are drastically higher than the estimated 4% prevalence of lifetime PTSD diagnosis reported in a 25-country study that included South Africa as the sole African country [2].

Sub-Saharan Africa is also disproportionately affected by the HIV/AIDS pandemic. Of the 38 million people estimated to be living with HIV/AIDS worldwide, over 70% live in sub-Saharan Africa [3]. While HIV has become a chronic illness, due to the wide spread roll out of antiretroviral therapy (ART), and mortality from AIDS greatly reduced [4], mental health issues remain common among persons living with HIV (PLWH) [5]. These issues include PTSD, depression, substance use disorders, eating disorders, and anxiety disorders, and they commonly co-occur [6, 7]. Probable PTSD occurs due to traumatic events experienced by the general population like serious accidents, natural disasters, political upheavals, and armed conflict, all which are common in sub-Saharan Africa [1]. PLWH in sub-Saharan Africa also may have increased risk of probable PTSD due to HIV-related traumatic events, such as intimate partner violence (IPV) and physical abuse [8].

Probable PTSD is associated with impaired quality of life, poor adherence with medical interventions, and high risk sexual behaviors [9, 10]. Among PLWH, probable PTSD may negatively affect HIV treatment outcomes [11, 12], adherence [13, 14], and retention in HIV care [15]. In addition, probable PTSD is further complicated by other common comorbid mental health disorders such as depression, as well as substance and alcohol use disorders [16]; among PLWH, probable PTSD commonly co-occurs with depression and alcohol use [17, 18]. Alcohol use is highly prevalent among PLWH [19] and may act as a coping mechanism for HIV-related stress [20, 21] and possibly probable PTSD.

While levels of probable PTSD in sub-Saharan Africa have been found to be high in several studies, there has been a high degree of heterogeneity in the results [1]. In addition, few studies have examined PTSD among PLWH in sub-Saharan Africa, and we are unaware of studies measuring probable PTSD among persons engaging in heavy alcohol use in this setting. Thus, we aimed to estimate the prevalence of probable PTSD in PLWH engaging in heavy alcohol use in Southwestern Uganda. Since untreated PTSD is associated with a host of negative consequences, and heavy drinking may be a response to PTSD which is not likely to be treated in low-income settings, we also sought to determine

whether the level of alcohol consumption is associated with experiencing probable PTSD, and investigated other psycho-social factors as well. We conducted these investigations within a study of PLWH who engage in heavy alcohol consumption and who are co-infected with latent tuberculosis (TB) in Southwestern Uganda.

Materials and methods

Setting and population

The present analysis uses baseline data (up to time of this interim analysis) from an ongoing research study of PLWH who were recruited from 4 large HIV clinics (ranging between 5000 and 15,000 patients) in Southwestern Uganda. The parent study, the Drinkers Intervention to Prevent Tuberculosis (DIPT, NCT03492216) study, is a randomized controlled trial (RCT) of economic incentives. The incentives are designed to promote reduced alcohol consumption by incentivizing negative point-of-care urine tests for the short-term alcohol biomarker, ethyl glucuronide (EtG) [22], and to promote isoniazid (INH) adherence by incentivizing INH-positive point-of-care urine tests, (using the Iso-Screen test) [23], among persons who engage in heavy alcohol consumption and are co-infected with HIV and TB, while receiving 6 months of INH preventive therapy. Details of the trial are described elsewhere (NCT03492216).

Study procedures

Screening for the DIPT Study is a multi-step process. Eligibility criteria at the initial screening step includes adults (≥ 18 years old) living with HIV, who are fluent in Runyankole or English, have been prescribed antiretroviral therapy (ART) for at least 6 months, live within 2 h driving distance or 60 km of the study site, have no plans to move out of the clinic's catchment area, have no history of active TB or taking TB preventive medications, and are a current self-reported drinker (prior 3 months). Exclusion criteria includes currently taking or having taken nevirapine (NVP) in the prior 2 weeks, those who are prescribed anti-convulsant medications or who have a history of recurring seizures. Eligibility further includes being positive for heavy alcohol use via the AUDIT-C (≥ 3 for women; ≥ 4 for men); positive for recent alcohol use based on a urine ethyl glucuronide (EtG) dipstick test (300 ng/mL cutoff, by Confirm Biosciences, San Diego, California); having alanine transaminase (ALT) and aspartate transaminase (AST) levels $< 2x$ the upper limit of normal; being cleared of active TB (those reporting TB symptoms); not being pregnant, and having a positive tuberculin skin test (TST) with an induration ≥ 5 mm 48–72 h after injection with purified protein derivative (PPD). TST was performed by study research assistants.

Measures

Research assistants collected data electronically with an interviewer-administered survey. The interviews were held in private rooms for confidentiality and were administered in Runyankole or English according to the participants' language preference. The study questionnaire, including the PTSD scale described below, was translated into Runyankole, back-translated to English, and the original and back-translated questionnaires were compared to assess how accurately each item was translated. Items found to be less accurately translated were discussed further to arrive at translations best mirroring the original meaning. The interview comprised of questions on demographics, alcohol use, other substance use, medications, general health status, and several psychosocial measures described below.

Dependent variable - Post-traumatic stress disorder

We measured probable PTSD at baseline using the primary care PTSD Screening Scale from the DSM-5 (PC-PTSD-5) [24]. This scale first screens for ever experiencing a serious traumatic event, including a serious accident or fire, a physical or sexual assault or abuse, an earthquake or flood, a war, seeing someone being killed or seriously injured, or having a loved one die through homicide or suicide. Those who answer yes are then asked about experiencing the following PTSD symptoms in the past month: (1) having nightmares about the event or thoughts about the event when one did not want to, (2) trying hard not to think about the event(s), or going out of one's way to avoid situations that reminded one of the event(s), (3) being constantly on guard, watchful or easily startled, (4) feeling numb or detached from people, activities, or one's surroundings, and (5) feeling guilty or unable to stop blaming oneself or others for the event(s) or any problems the event(s) may have caused. The sum of the 'yes' responses to the 5 questions was used to calculate a score of 0–5; probable PTSD was defined as a score ≥ 3 . The PC-PTSD-5 screening tool has shown strong diagnostic accuracy [24], and can be effectively used to identify people with probable PTSD [24, 25].

Independent variable - Alcohol use

The Alcohol Use Disorder Identification Test-Consumption (AUDIT-C), a brief screening for heavy drinking and or active alcohol use disorder [26], was used to assess the level of drinking; we used a version modified to assess drinking in the prior 3 months [27, 28].

Covariates

We collected participant characteristics that included age, sex, level of education, and marital status. We assessed general health status using the first question of

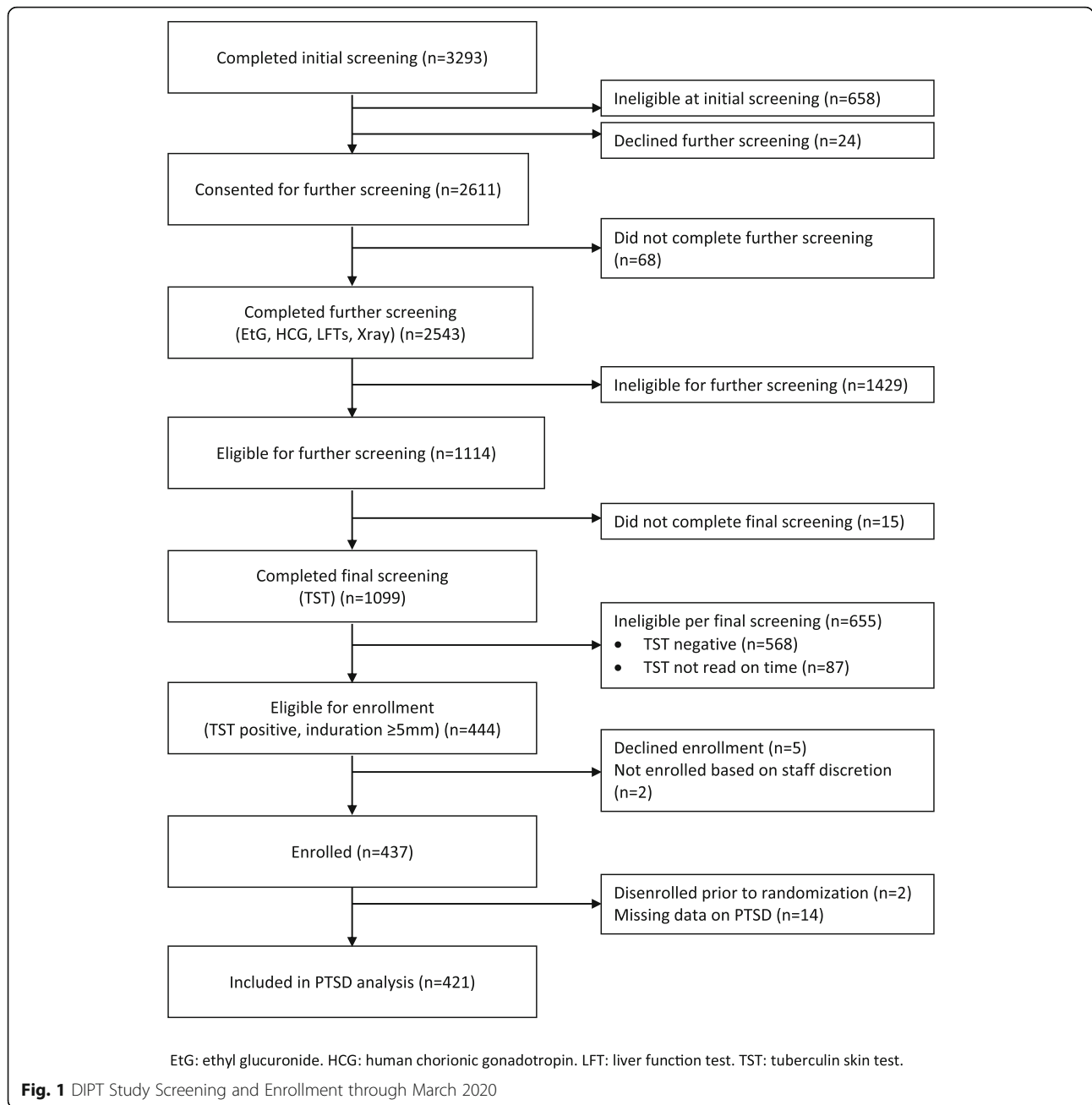
the Medical Outcomes Study-HIV (MOS-HIV) Health Survey that asked; In general, would you say your health is excellent, very good, good, fair, or poor? The MOS-HIV has been used before as a validated measure of health in Uganda [29]. We assessed lifetime (ever) and current (past 3 months) tobacco and other substance use. We measured social desirability reporting using the Marlowe-Crowne Social Desirability Scale (MC-SDS) [30] 28-item modified survey (possible range 0–28), as a continuous variable. Social desirability was considered as a potential confounder for probable PTSD and alcohol use. We measured symptoms of depression using the Center for Epidemiologic Studies Depression (CESD) Scale, which has 20 questions, each scaled from 0 to 3, with a positive assessment if the score was ≥ 16 [31, 32]. We measured spirituality/intrinsic religiosity using the Duke University Religion Index (DUREL scale [33]) and also assessed religion. Religion and spirituality were of interest as they may impact one's response when faced with trauma. We used intrinsic religiosity/subjective religiosity (subscale 3) to measure the participants' degree of personal religious commitment and motivation in religious matters. The scores on this scale were considered as a continuous variable.

Statistical analyses

We included baseline data only. We described the sample characteristics using proportions for categorical variables and mean, median, interquartile range (IQR) for continuous variables. We estimated Spearman correlations between pairs of potential predictor variables to avoid including any highly correlated variables in the same multivariable models. We used unadjusted odds ratios for two variables and adjusted for multiple variables to examine associations between the predictors and probable PTSD. The final multivariable model included level of alcohol use, using the AUDIT-C score as a continuous variable and any covariates that were associated with probable PTSD in bivariate analyses at $p < 0.10$. We also conducted two sensitivity analyses of the final model: 1) to examine whether sex acts as an effect modifier for the association between alcohol use and PTSD, we included and tested for an interaction between participant sex and alcohol use in the adjusted model; 2) we excluded depression to see its impact on the association of level of alcohol use with PTSD, i.e., exploring whether it was on the causal pathway from level of alcohol use to probable PTSD.

Results

We screened 3293 persons with HIV from May 2018 through March 2020 (Fig. 1). Of those screened, 2611 people were eligible after the initial screening step; the main reasons for exclusion at this step were having a



history of taking TB medications, a history of active TB, or taking nevirapine. At the next screening step which included urine EtG screening for recent alcohol use, and testing to exclude elevated liver enzymes, active TB, and pregnancy, the most common reason for exclusion was a negative EtG test ($n = 1251$); 1114 people remained eligible for PPD screening. Finally, 435 people (39%) who tested PPD-positive, were enrolled, and participated in the baseline survey. Four hundred twenty-one (421) participants were included in this analysis, as 14 had missing answers to the PTSD questions. Of the included participants, more than two-thirds (68.2%) were male

and the median age was 40 (interquartile range [IQR] 32–47). The majority of the participants reported primary school education or less (78.6%), and 59.4% of the participants were either married or cohabiting. Participants reported their religious affiliation as Catholic (50.4%), Protestant (43%) and other denominations (6.7%). One in five of the participants (18.3%) reported having depressive symptoms ($CES-D \geq 16$). More than half of the participants reported their general health status was excellent or very good (52.0%). The median AUDIT-C score was 6 [IQR 4–8]. Nearly 40% of participants reported having ever smoked tobacco in their

Table 1 Baseline characteristics, DIPT study participants through March 2020 with PTSD data, Uganda ($n = 421$)

	N (%) or median [IQR]
Age (years)	40 [32–47]
Sex	
Female	134 (31.8)
Male	287 (68.2)
More than a primary education?	
No	331 (78.6)
Yes	90 (21.4)
Married?	
No	171 (40.6)
Yes	250 (59.4)
Religion	
Protestant	181 (43.0)
Catholic	212 (50.4)
Other	28 (6.7)
DUREL: intrinsic religiosity	14 [10–15]
Social desirability scale	19 [17–22]
General health status	
Excellent/Very good	219 (52.0)
Good/Fair/Poor	202 (48.0)
AUDIT-C (continuous)	6 [4–8]
Lifetime smoking	
Never	261 (62.0)
Ever	160 (38.0)
Lifetime drug use	
Never	367 (87.2)
Ever	54 (12.8)
Depression (CESD ≥ 16)	
No	344 (81.7)
Yes	77 (18.3)
Ever experienced an unusually frightening, horrible or traumatic event?	
No	210 (49.9)
Yes	211 (50.1)
Probable PTSD? ^a	
No	334 (79.3)
Yes	87 (20.7)
PTSD symptoms, past 1 month:	
Nightmares (=yes)	115 (27.3)
Avoidance (=yes)	119 (28.3)
On guard/easily startled (=yes)	91 (21.6)
Felt numb or detached (=yes)	43 (10.2)
Felt guilty or blamed oneself/others (=yes)	49 (11.6)

^a Probable PTSD? (score $> = 3$) Respondents were considered to be having probable PTSD if they answered 'yes' to any 3 of the 5 questions of how the traumatic events affected them in the past month

lifetime, and 12.8% of participants reported ever using illicit drugs (Table 1). Khat (a chewed stimulant) was the most commonly used illicit drug, reported by 10%, marijuana was reported by 3.8%, kuba (a Ugandan informal word for a form of smokeless tobacco) by 3.1%, petrol sniffing by 1%; while no participants reported having ever used other illicit drugs.

PTSD symptoms and prevalence of probable PTSD

Half (50.1%) of the participants reported ever experiencing a traumatic event. PTSD symptoms experienced in the past month included avoidance (28.3%), having nightmares (27.3%), feeling on guard or easily startled (21.6%), feeling guilty or blaming one's self or others (11.6%), and feeling numb or detached (10.2%). The prevalence of probable PTSD (i.e., a score ≥ 3) among the 421 participants was 20.7% (Table 1).

In the unadjusted analyses, AUDIT-C score (OR for one unit increase 1.09; 95% CI: 0.99, 1.20) was associated with PTSD, as were age (OR = 0.96; 95% CI: 0.93, 0.98), the presence of depressive symptoms (OR = 2.37; 95% CI: 1.37, 4.09), and intrinsic religiosity (OR for one unit increase in score = 1.07; 95% CI: 1.00, 1.14) ($p < 0.10$) (Table 2). There were also associations between lifetime smoking (OR = 1.61; 95% CI 1.00, 2.59) and lifetime drug use (OR = 1.76; 95% CI: 0.93, 3.33) with probable PTSD.

In adjusted analyses, self-reported level of alcohol use was not associated with probable PTSD (adjusted OR [AOR] for one unit increase in AUDIT-C point 1.02; 95% CI: 0.92, 1.14). Presence of depressive symptoms (AOR = 1.89; 95% CI: 1.04, 3.44) and lifetime smoking (AOR = 1.89; 95% CI 1.10, 3.24) were associated with probable PTSD (Table 3). There were increased odds of probable PTSD with higher levels of intrinsic religiosity (AOR for one unit increase in score 1.07; 95% CI: 0.99, 1.14) and good, fair, or poor versus excellent or very good health status (AOR = 1.54; 95% CI: 0.91, 2.61); however, these associations were not statistically significant. In sensitivity analyses, we found no significant interaction between gender and AUDIT-C level, and the association between AUDIT-C level and PTSD did not substantially change after excluding depressive symptoms (data not shown).

Discussion

In this analysis among PLWH who engage in heavy alcohol consumption in southwestern Uganda, we found that half of the participants surveyed reported experiencing a traumatic event and 21% met criteria for probable PTSD. We are aware of a handful of other studies that assessed probable PTSD among PLWH in low resource settings. The probable PTSD prevalence observed in this analysis was similar to the 19.6% prevalence of probable PTSD found in a study of PLWH in care in urban Uganda [34],

Table 2 Unadjusted associations with and unadjusted odds ratios (OR) and (95% confidence intervals (CI)) for probable PTSD, DIPT study participants through March 2020, Uganda (n = 421)

	Probable PTSD (> = 3)		OR (95% CI)	p-value
	No (n = 334) N (%) or median [IQR]	Yes (n = 87) N (%) or median [IQR]		
AUDIT-C (continuous)	6 [4–8]	7 [4–9]	1.09 (0.99, 1.20)	0.066
Age (years)	40.5 [34–48]	37 [31–43]	0.96 (0.93, 0.98)	0.001
Sex				0.227
Female	111 (82.8)	23 (17.2)	1.00	
Male	223 (77.7)	64 (22.3)	1.39 (0.82, 2.35)	
More than a primary education?				0.861
No	262 (79.2)	69 (20.9)	1.00	
Yes	72 (80.0)	18 (20.0)	0.95 (0.53, 1.70)	
Married?				0.743
No	137 (80.1)	34 (19.9)	1.00	
Yes	197 (78.8)	53 (21.2)	1.08 (0.67, 1.76)	
Religion				0.369
Protestant	139 (76.8)	42 (23.2)	1.00	
Catholic	174 (82.1)	38 (17.9)	0.72 (0.44, 1.18)	
Other	21 (75.0)	7 (25.0)	1.10 (0.44, 2.77)	
DUREL: intrinsic religiosity	12 [9–15]	15 [11–15]	1.07 (1.00, 1.14)	0.054
General health status				0.048
Excellent/Very good	182 (83.1)	37 (16.9)	1.00	
Good/Fair/Poor	152 (75.3)	50 (24.8)	1.62 (1.00, 2.61)	
Lifetime smoking				0.050
Never	215 (82.4)	46 (17.6)	1.00	
Ever	119 (74.4)	41 (25.6)	1.61 (1.00, 2.59)	
Lifetime drug use				0.084
Never	296 (80.7)	71 (19.4)	1.00	
Ever	38 (70.4)	16 (29.6)	1.76 (0.93, 3.33)	
Depression (CESD >= 16)				0.002
No	283 (82.3)	61 (17.7)	1.00	
Yes	51 (66.2)	26 (33.8)	2.37 (1.37, 4.09)	
Social desirability score	20 [17–23]	18 [15–19]	0.85 (0.80, 0.91)	< 0.001

lower than that observed in PLWH in a study conducted in Zimbabwe (55.3%) [35], and higher than that reported by a study among PLWH in post-conflict northern Uganda (8.3%) [9]. The prevalence we observed is quite similar to the 22% prevalence reported from a meta-analysis of data from 10 countries in sub-Saharan Africa that included some studies among PLWH, but did not calculate probable PTSD prevalence by HIV status [1]. The wide range of proportions of probable PTSD in these studies of PLWH and in the studies included in the above meta-analysis may be due to differences in scales used and differing populations. This study adds to the literature suggesting much higher rates of probable PTSD in

low-resource settings in Sub-Saharan Africa compared to elsewhere [1, 36].

The level of alcohol use was not associated with probable PTSD in our study; this was consistent with the findings of a study among PLWH in a post-conflict area in northern Uganda [9]. However, we were only including people if they used alcohol at unhealthy levels, thus within this restricted sample, alcohol use severity and PTSD symptoms were not associated. But within the general population, alcohol use has been associated with probable PTSD [18, 37], and several theories have been put forward to explain this relationship. Alcohol use may lead to traumatic events that may cause probable PTSD, or may serve as self-medication to deal with

Table 3 Adjusted odds ratios (aOR) and 95% confidence intervals (CI) for probable PTSD, DIPT study participants through March 2020, Uganda ($n = 417$)

	aOR (95% CI)	p-value
AUDIT-C (continuous)	1.02 (0.92, 1.14)	0.693
Age (years)	0.96 (0.93, 0.99)	0.004
DUREL: intrinsic religiosity	1.07 (0.99, 1.14)	0.073
General health status		0.111
Excellent/Very good	1.00	
Good/Fair/Poor	1.54 (0.91, 2.61)	
Lifetime smoking		0.022
Never	1.00	
Ever	1.89 (1.10, 3.24)	
Lifetime drug use		0.722
Never	1.00	
Ever	0.88 (0.42, 1.81)	
Depression (CESD ≥ 16)		0.037
No	1.00	
Yes	1.89 (1.04, 3.44)	
Social desirability score	0.86 (0.80, 0.93)	< 0.001

symptoms of PTSD and therefore be a coping mechanism [20]. Our study population was comprised only of persons engaging in heavy drinking, so if alcohol is consumed to cope with probable PTSD up to only a certain level, e.g., a ceiling effect, such an effect might explain our failure to detect an association between level of drinking and probable PTSD. Another possible explanation for lack of association between level of drinking and probable PTSD in our sample could be underreporting of PTSD symptoms due to stigma and other barriers to admitting a mental health problem [38]. Underestimation of prevalence of mental health disorders is also another possible explanation for lack of significance between alcohol use and PTSD [39].

A notable finding was the association between depressive symptoms and probable PTSD. In our study, we found that having symptoms of depression was associated with probable PTSD; other studies of PLWH have reported similar associations [9, 40]. This association could be due to common overlapping symptoms between depression and probable PTSD [41]. Another possible explanation for this association could be the co-occurrence of mental health disorders [35]. One study in South Africa that examined the prevalence and factors associated with probable PTSD found increased prevalence of depression among PLWH with probable PTSD compared to those without (29% versus 7%) [42]. Individuals with co-occurring probable PTSD and major depressive disorder tend to display more anxiety, depression and more PTSD symptoms and the

occurrence is related to a more severe symptom presentation [43]. Co-existence of multiple mental disorders among PLWH is common and has been reported [35, 42]. Higher intrinsic religiosity was also associated with probable PTSD; other studies have reported religiosity as a coping mechanism for probable PTSD [44]. Those who had a history of lifetime smoking had higher odds of probable PTSD. Smoking has been found to be highly prevalent among patients with probable PTSD for its mood enhancement consequences and may serve as a coping mechanism for a cluster of negative affect, anxiety, and depression induced by probable PTSD [44–47].

Limitations

This study was embedded in a research study that had specific entry criteria, including requiring a purified protein derivative positive (PPD+) result and being on ART for at least 6 months, thus the generalizability may be limited. We did not measure the different specific life events that may have led to probable PTSD, so we have an incomplete picture of what may have precipitated the probable PTSD. The cross-sectional design limited the findings to associations only, and we are not able to establish cause and effect between probable PTSD and factors that were associated with probable PTSD, such as depression, religiosity, and smoking. Although the populations consisted of persons with confirmed heavy alcohol use, the level of drinking was self-reported and this may be subject to social desirability. Social desirability in reporting level of alcohol use has been demonstrated in this population [48], however we attempted to correct for this by including a social desirability scale.

Strengths

All participants who were included in this study were confirmed to be persons who engage in heavy drinking through ethyl glucuronide testing. Drinking status can be particularly unreliable by self-report due to social desirability bias, so having an objective biologic measure is a strength for measuring this. Having four different sites, two of which were in a rural setting, with extensive clinical data from a relatively large care-seeking sample, was a strength.

Conclusion

While we found that probable PTSD is common among PLWH who engage in heavy alcohol consumption, we did not find a relationship between higher level of alcohol consumed and probable PTSD. The high level of probable PTSD and its association with depression suggests that there is a need for routine mental health screening in this population and more studies to assess coping mechanisms and design interventions for probable PTSD in this population.

Supplementary Information

The online version contains supplementary material available at <https://doi.org/10.1186/s12888-021-03464-z>.

Additional file 1.

Acknowledgements

We are grateful to Mbarara University of Science and Technology, Makerere University College of Health Sciences, Mbarara Regional Referral Hospital, Infectious Diseases Research Collaboration (IDRC) Uganda, the staff of the Mbarara Regional Referral Hospital Immune Suppression Syndrome Clinic, the staff of Infectious Diseases Research Collaboration (IDRC) Uganda, our research and administrative teams at UCSF, IDRC and MUST. We give special thanks to the study participants for their time and contribution to this work.

Authors' contributions

The study was conceived and designed by JH and GC; WRM, MGM, RF, NIE, and JA contributed to the study design; AK, JA, MGM, JH, NIE, WRM, GC, BB, and KM contributed to the writing of the manuscript; RF and SL performed data analysis and interpretation; MK did a critical review of the manuscript. All authors contributed to study planning, reviewing the manuscript, and approved the final manuscript.

Funding

This work was funded by the US National Institutes of Health; Grant U01AA026223 (Hahn) and U01AA026221 (Chamie) and K24AA022586 (Hahn).

Availability of data and materials

The data and materials are available on request from the corresponding author (JH).

Declarations

We confirm that all methods were carried out in accordance with relevant guidelines and regulations. We confirm that informed consent was obtained from study participants.

Ethics approval and consent to participate

Ethical approval was obtained from the University of California, San Francisco Institutional Review Board, the Mbarara University of Science and Technology Research Ethics Committee, the Makerere University School of Medicine Research Ethics Committee, and the Uganda National Council for Science and Technology, in accordance with the relevant guidelines and regulations. Participants provided written informed consent prior to study participation.

Consent for publication

Informed consent for publishing was obtained from study participants.

Competing interests

The authors declare that they have no competing interests.

Author details

¹Global Health Collaborative, Mbarara University of Science and Technology, Mbarara, Uganda. ²Department of Medicine, University of California, San Francisco, CA, USA. ³Infectious Diseases Research Collaboration (IDRC), Kampala, Uganda. ⁴Boston University School of Public Health, Boston, MA, USA. ⁵Mbarara Regional Referral Hospital, Mbarara, Uganda. ⁶Elsion S Floyd College of Medicine, Washington State University, Spokane, WA, USA. ⁷Department of Epidemiology and Biostatistics, University of California, San Francisco, CA, USA.

Received: 6 March 2021 Accepted: 1 September 2021

Published online: 18 September 2021

References

- Ng LC, Stevenson A, Kalapurakel SS, Hanlon C, Seedat S, Harerimana B, et al. National and regional prevalence of posttraumatic stress disorder in sub-Saharan Africa: a systematic review and meta-analysis. *PLoS Med.* 2020; 17(5):e1003090. <https://doi.org/10.1371/journal.pmed.1003090>.
- Koenen KC, Ratanatharathorn A, Ng L, McLaughlin KA, Bromet EJ, Stein DJ, et al. Posttraumatic stress disorder in the World Mental Health Surveys. *Psychol Med.* 2017;47(13):2260–74.
- United Nations Joint Programme on HIV/AIDS (UNAIDS). UNAIDS Data 2019. https://www.unaids.org/sites/default/files/media_asset/2019-UNAIDS-data_en.pdf. Accessed May 2020.
- Kharsany ABM, Karim QA. HIV infection and AIDS in sub-Saharan Africa: current status, Challenges and Opportunities. *Open AIDS J.* 2016;10(1):34–48. <https://doi.org/10.2174/1874613601610010034>.
- Chibanda D, Cowan F, Gibson L, Weiss HA, Lund C. Prevalence and correlates of probable common mental disorders in a population with high prevalence of HIV in Zimbabwe. *BMC Psychiatry.* 2016;16(1):55. <https://doi.org/10.1186/s12888-016-0764-2>.
- Myer L, Smit J, Le Roux L, Parker S, Stein DJ, Seedat S. Common mental disorders among HIV-infected individuals in South Africa: prevalence, predictors, and validation of brief psychiatric rating scales. *AIDS Patient Care STDs.* 2008;22(2):147–58. <https://doi.org/10.1089/apc.2007.0102>.
- Khouzam HR, Donnelly NJ. Psychiatric morbidity in HIV patients. *Can J Psychiatr.* 1998;43(1):51–6. <https://doi.org/10.1177/070674379804300105>.
- Demmer C. Dealing with AIDS-related loss and grief in a time of treatment advances. *Am J Hospice Palliat Med.* 2001;18(1):35–41.
- Olwit C, Mpango R, Okello J, Kinyanda E. Post-traumatic stress disorder among HIV-infected adults attending an HIV treatment clinic in post-conflict Gulu district, Uganda. *African Journal of Traumatic Stress.* 2020. <https://aproug.com/wp-content/uploads/2020/05/POST-TRAUMATIC-STRESS-DISORDER-AMONG-HIV-INFECTED-ADULTS-ATTENDING-AN-HIV-TREATMENT-CLINIC-IN-POST-CONFLICT-GULU-DISTRICT-UGANDA.pdf>. Accessed 23 May 2020.
- McLean CP, Fitzgerald H. Treating posttraumatic stress symptoms among people living with HIV: a critical review of intervention trials. *Curr Psychiatry Rep.* 2016;18(9):83. <https://doi.org/10.1007/s11920-016-0724-z>.
- Hou J, Fu J, Meng S, Jiang T, Guo C, Wu H, et al. Posttraumatic stress disorder and nonadherence to treatment in people living with hiv: a systematic review and meta-analysis. *Front Psychiatry.* 2020;11:834.
- Bing E, Burnam M, Longshore D, Fleishman J, Sherbourne C, London A, et al. Psychiatric disorders and drug use among human immunodeficiency virus-infected adults in the United States. *Arch Gen Psychiatry.* 2001;58(8):721–8. <https://doi.org/10.1001/archpsyc.58.8.721>.
- Vranceanu AM, Safren SA, Lu M, Coady WM, Skolnik PR, Rogers WH, et al. The relationship of Post-traumatic stress disorder and depression to antiretroviral medication adherence in persons with HIV. *AIDS Patient Care STDs.* 2008;22(4):313–21. <https://doi.org/10.1089/apc.2007.0069>.
- Wagner GJ, Bogart LM, Galvan FH, Banks D, Klein DJ. Discrimination as a key mediator of the relationship between posttraumatic stress and HIV treatment adherence among African American men. *J Behav Med.* 2012; 35(1):8–18. <https://doi.org/10.1007/s10865-011-9320-1>.
- Rooks-Peck CR, Adegbite AH, Wichser ME, Ramshaw R, Mullins MM, Higa D, et al. Mental health and retention in HIV care: a systematic review and meta-analysis. *Health Psychol.* 2018;37(6):574–85. Available from: <https://pubmed.ncbi.nlm.nih.gov/29781655>. <https://doi.org/10.1037/hea0000606>.
- Korte KJ, Bountress KE, Tomko RL, Killeen T, Moran-Santa Maria M, Back SE. Integrated treatment of PTSD and substance use disorders: the mediating role of PTSD improvement in the reduction of depression. *J Clin Med.* 2017; 6(1):9. <https://doi.org/10.3390/jcm6010009>.
- Flory JD, Yehuda R. Comorbidity between post-traumatic stress disorder and major depressive disorder: alternative explanations and treatment considerations. *Dialogues Clin Neurosci.* 2015;17(2):141–50. <https://doi.org/10.31887/DCNS.2015.17.2/jflory>.
- Carter AC, Capone C, Short EE. Co-occurring posttraumatic stress disorder and alcohol use disorders in veteran populations. *J Dual Diagn.* 2011;7(4):285–99 2011/11/10.
- Hahn JA, Samet JH. Alcohol and HIV disease progression: weighing the Evidence. *Curr HIV/AIDS Rep.* 2010;7(4):226–33. <https://doi.org/10.1007/s11904-010-0060-6>.
- Pence BW, Thielman NM, Whetten K, Ostermann J, Kumar V, Mugavero MJ. Coping strategies and patterns of alcohol and drug use among HIV-infected patients in the United States southeast. *AIDS Patient Care STDs.* 2008;22(11):869–77. <https://doi.org/10.1089/apc.2008.0022>.
- Cook RL, Cook CL, Karki M, Weber KM, Thoma KA, Loy CM, et al. Perceived benefits and negative consequences of alcohol consumption in women living with HIV: a qualitative study. *BMC Public Health.* 2016;16(1):263. <https://doi.org/10.1186/s12889-016-2928-x>.

22. McDonell MG, Skalsky J, Leicky E, McPherson S, Battalio S, Nepom JR, et al. Using ethyl glucuronide in urine to detect light and heavy drinking in alcohol dependent outpatients. *Drug Alcohol Depend.* 2015;157:184–7. <https://doi.org/10.1016/j.drugalcdep.2015.10.004>.
23. Soobratty MR, Whitfield R, Subramaniam K, Grove G, Carver A, O'Donovan GV, et al. Point-of-care urine test for assessing adherence to isoniazid treatment for tuberculosis. *Eur Respir J.* 2014;43:1519–22 European Respiratory Society.
24. Prins A, Bovin MJ, Smolenski DJ, Marx BP, Kimerling R, Jenkins-Guarnieri MA, et al. The primary care PTSD screen for DSM-5 (PC-PTSD-5): development and evaluation within a veteran primary care sample. *J Gen Intern Med.* 2016;31(10):1206–11. <https://doi.org/10.1007/s11606-016-3703-5>.
25. Stinchfield R, McCreedy J, Turner NE, Jimenez-Murcia S, Petry NM, Grant J, et al. Reliability, validity, and classification accuracy of the DSM-5 diagnostic criteria for gambling disorder and comparison to DSM-IV. *J Gambl Stud.* 2016;32(3):905–22. <https://doi.org/10.1007/s10899-015-9573-7>.
26. Bradley KA, McDonell MB, Bush K, Kivlahan DR, Diehr P, Fihn SD. The AUDIT alcohol consumption questions. *Alcohol Clin Exp Res.* 1998;22(8):1842. <https://doi.org/10.1097/0000374-199811000-00034>.
27. Thakarar K, Asimwe SB, Cheng DM, Forman L, Ngabirano C, Muyindike WR, et al. Alcohol consumption in Ugandan HIV-infected household-brewers versus non-brewers. *AIDS Behav.* 2016;20(10):2408–17. <https://doi.org/10.1007/s10461-016-1421-y>.
28. Asimwe SB, Fatch R, Emenyonu NI, Muyindike WR, Kekibiina A, Santos G-M, et al. Comparison of traditional and novel self-report measures to an alcohol biomarker for quantifying alcohol consumption among HIV-infected adults in Sub-Saharan Africa. *Alcohol Clin Exp Res.* 2015;39(8):1518–27 2015/07/04.
29. Wu AW, Revicki DA, Jacobson D, Malitz FE. Evidence for reliability, validity and usefulness of the medical outcomes study HIV health survey (MOS-HIV). *Qual Life Res.* 1997;6(6):481–93. <https://doi.org/10.1023/A:1018451930750>.
30. Vu A, Tran N, Pham K, Ahmed S. Reliability of the Marlowe-Crowne social desirability scale in Ethiopia, Kenya, Mozambique, and Uganda. *BMC Med Res Methodol.* 2011;11(1):162. <https://doi.org/10.1186/1471-2288-11-162>.
31. Moon JR, Huh J, Song J, Kang I-S, Park SW, Chang S-A, et al. The Center for Epidemiologic Studies Depression Scale is an adequate screening instrument for depression and anxiety disorder in adults with congenital heart disease. *Health Qual Life Outcomes.* 2017;15(1):176. <https://doi.org/10.1186/s12955-017-0747-0>.
32. Radloff LS. The CES-D scale: a self-report depression scale for research in the general population. *Appl Psychol Meas.* 1977;1(3):385–401. <https://doi.org/10.1177/014662167700100306>.
33. Koenig HG, Büssing A. The Duke University religion index (DUREL): a five-item measure for use in epidemiological studies. *Religions.* 2010;1(1):78–85. <https://doi.org/10.3390/rel1010078>.
34. Petrushkin H, Boardman J, Ovuga E. Psychiatric disorders in HIV-positive individuals in urban Uganda. *Psychiatr Bull.* 2018;29(12):455–8.
35. Verhey R, Gibson L, Brakarsh J, Chibanda D, Seedat S. Prevalence and correlates of probable post-traumatic stress disorder and common mental disorders in a population with a high prevalence of HIV in Zimbabwe. *Eur J Psychotraumatol.* 2018;9(1):1536286.
36. Charlson FJ, Steel Z, Degenhardt L, Chey T, Silove D, Marnane C, et al. Predicting the impact of the 2011 conflict in Libya on population mental health: PTSD and depression prevalence and mental health service requirements. *PLoS One.* 2012;7(7):e40593 2012/07/13.
37. Behaviors A, Science E. Epidemiological evidence about the relationship between PTSD and alcohol abuse. *Addict Behav.* 1998;23(6):813–25. [https://doi.org/10.1016/S0306-4603\(98\)00098-7](https://doi.org/10.1016/S0306-4603(98)00098-7).
38. Hoge CW, Castro CA, Messer SC, Mcgurk D, Cotting DI, Koffman RL, et al. Combat Duty in Iraq and Afghanistan, Mental Health Problems, and Barriers to Care. *N Engl J Med.* 2004;351:13–22.
39. Takayanagi Y, Spira AP, Roth KB, Gallo JJ, Eaton WW, Mojtabai R. Accuracy of reports of lifetime mental and physical disorders: results from the Baltimore Epidemiological catchment area study. *JAMA Psychiatry.* 2014;71(3):273–80. <https://doi.org/10.1001/jamapsychiatry.2013.3579>.
40. Mugisha J, Muyinda H, Wandiembe P, Kinyanda E. Prevalence and factors associated with Posttraumatic Stress Disorder seven years after the conflict in three districts in northern Uganda (The Wayo-Nero Study). *BMC Psychiatry.* 2015;15(1):1–2.
41. Price M, Legrand AC, Brier ZM, Hébert-Dufresne L. The symptoms at the center: Examining the comorbidity of posttraumatic stress disorder, generalized anxiety disorder, and depression with network analysis. *J Psychiatr Res.* 2019;109:52–8 2018/11/21. Available from: <https://pubmed.ncbi.nlm.nih.gov/30502492>.
42. Olley BO, Zeier MD, Seedat S, Stein DJ. Post-traumatic stress disorder among recently diagnosed patients with HIV/AIDS in South Africa. *AIDS Care.* 2005;17(5):550–7 2005/07/23.
43. Post LM, Zoellner LA, Youngstrom E, Feeny NC. Understanding the relationship between co-occurring PTSD and MDD: symptom severity and affect. *J Anxiety Disord.* 2011;25(8):1123–30 2011/08/10.
44. Šagud M, Petrović B, Vilibić M, Mihaljević-Peleš A, Vuksan-Čusa B, Radoš I, et al. The relationship among psychopathology, religiosity, and nicotine dependence in Croatian war veterans with posttraumatic stress disorder. *Croat Med J.* 2018;59(4):165–77. <https://doi.org/10.3325/cmj.2018.59.165>.
45. Cook J, Jakupcak M, Rosenheck R, Fontana A, McFall M. Influence of PTSD symptom clusters on smoking status among help-seeking Iraq and Afghanistan veterans. *Nicotine Tob Res.* 2009;11(10):1189–95 2009/07/31. Available from: <https://pubmed.ncbi.nlm.nih.gov/19648174>.
46. Zvolensky MJ, Gibson LE, Vujanovic AA, Gregor K, Bernstein A, Kahler C, et al. Impact of posttraumatic stress disorder on early smoking lapse and relapse during a self-guided quit attempt among community-recruited daily smokers. *Nicotine Tob Res.* 2008;10(8):1415–27. <https://doi.org/10.1080/1462200802238951>.
47. Pericot-Valverde I, Elliott RJ, Miller ME, Tidey JW, Gaalema DE. Posttraumatic stress disorder and tobacco use: A systematic review and meta-analysis. *Addict Behav.* 2018;84:238–47 2018/05/03.
48. Adong J, Fatch R, Emenyonu N, Cheng D, Muyindike W, Ngabirano C, et al. Social desirability Bias impacts self-reported alcohol use among persons with HIV in Uganda. *Alcohol Clin Exp Res.* 2019;1(12):43–2598. <https://doi.org/10.1111/acer.14218>.

Publisher's Note

Springer Nature remains neutral with regard to jurisdictional claims in published maps and institutional affiliations.

Ready to submit your research? Choose BMC and benefit from:

- fast, convenient online submission
- thorough peer review by experienced researchers in your field
- rapid publication on acceptance
- support for research data, including large and complex data types
- gold Open Access which fosters wider collaboration and increased citations
- maximum visibility for your research: over 100M website views per year

At BMC, research is always in progress.

Learn more biomedcentral.com/submissions



Terms and Conditions

Springer Nature journal content, brought to you courtesy of Springer Nature Customer Service Center GmbH (“Springer Nature”).

Springer Nature supports a reasonable amount of sharing of research papers by authors, subscribers and authorised users (“Users”), for small-scale personal, non-commercial use provided that all copyright, trade and service marks and other proprietary notices are maintained. By accessing, sharing, receiving or otherwise using the Springer Nature journal content you agree to these terms of use (“Terms”). For these purposes, Springer Nature considers academic use (by researchers and students) to be non-commercial.

These Terms are supplementary and will apply in addition to any applicable website terms and conditions, a relevant site licence or a personal subscription. These Terms will prevail over any conflict or ambiguity with regards to the relevant terms, a site licence or a personal subscription (to the extent of the conflict or ambiguity only). For Creative Commons-licensed articles, the terms of the Creative Commons license used will apply.

We collect and use personal data to provide access to the Springer Nature journal content. We may also use these personal data internally within ResearchGate and Springer Nature and as agreed share it, in an anonymised way, for purposes of tracking, analysis and reporting. We will not otherwise disclose your personal data outside the ResearchGate or the Springer Nature group of companies unless we have your permission as detailed in the Privacy Policy.

While Users may use the Springer Nature journal content for small scale, personal non-commercial use, it is important to note that Users may not:

1. use such content for the purpose of providing other users with access on a regular or large scale basis or as a means to circumvent access control;
2. use such content where to do so would be considered a criminal or statutory offence in any jurisdiction, or gives rise to civil liability, or is otherwise unlawful;
3. falsely or misleadingly imply or suggest endorsement, approval, sponsorship, or association unless explicitly agreed to by Springer Nature in writing;
4. use bots or other automated methods to access the content or redirect messages
5. override any security feature or exclusionary protocol; or
6. share the content in order to create substitute for Springer Nature products or services or a systematic database of Springer Nature journal content.

In line with the restriction against commercial use, Springer Nature does not permit the creation of a product or service that creates revenue, royalties, rent or income from our content or its inclusion as part of a paid for service or for other commercial gain. Springer Nature journal content cannot be used for inter-library loans and librarians may not upload Springer Nature journal content on a large scale into their, or any other, institutional repository.

These terms of use are reviewed regularly and may be amended at any time. Springer Nature is not obligated to publish any information or content on this website and may remove it or features or functionality at our sole discretion, at any time with or without notice. Springer Nature may revoke this licence to you at any time and remove access to any copies of the Springer Nature journal content which have been saved.

To the fullest extent permitted by law, Springer Nature makes no warranties, representations or guarantees to Users, either express or implied with respect to the Springer nature journal content and all parties disclaim and waive any implied warranties or warranties imposed by law, including merchantability or fitness for any particular purpose.

Please note that these rights do not automatically extend to content, data or other material published by Springer Nature that may be licensed from third parties.

If you would like to use or distribute our Springer Nature journal content to a wider audience or on a regular basis or in any other manner not expressly permitted by these Terms, please contact Springer Nature at

onlineservice@springernature.com